



2020 Trustee Auction

The Cliff Club at Snowbird
Home Owner's Association

This years' sale is scheduled as follows:

DATE AND TIME:

Friday, May 29th, 2020

12:00 pm (Noon)

LOCATION:

Scott M. Matheson Courthouse

Courthouse Rotunda

450 South State Street

Salt Lake City, UT

Pay parking available, enter parking on 4th South

WHAT IS THE "TRUSTEE SALE": The Trustee Sale is the foreclosure, by the Owners' Association, on owned units resulting from a failure to pay operational assessments (i.e. Maintenance, Lock-out, Late Payment Fees, etc.) owed to the Association. This is done in accordance with the Covenants, Conditions, and Restrictions of the Association, and Utah State Laws. Units are auctioned for a minimum bid of what is owed to the Association. The debt owed on units listed may be paid at any time prior to the auction, resulting in their removal from the list.

METHOD OF SALE: Public auction - Units sold to highest bidder

STARTING BID: This will be determined at the time of auction based upon the amount(s) owed. It is estimated that some ownerships will be sold at auction for as low as \$100.00 per ownership share.

METHOD OF PAYMENT: cash, cashier's checks, or travelers' checks only. There will be time allowed after the sale to have cashier's checks prepared. Have cashier's checks made payable to the order of Cliff Club Owners' Association.

BIDDING INFORMATION IF YOU CANNOT ATTEND: You may designate an agent to be present for you. Your agent should know in which name(s) and how the new deed(s) should be recorded.

RECORDING DEEDS: If you should purchase a unit(s), Cliff Club Owners' Association will have the new deed(s) prepared and recorded with the Salt Lake County Recorder's office for \$100 per week/unit and subsequently mail the recorded deeds to each owner after a copy has been made for the Cliff Club's records. Please be prepared to give directive on how you wish title to be conveyed.

Once you purchase a unit at the sale, it will be cleared of any outstanding Cliff Club Owners' Association lien and maintenance fee balances due.

If you have any further questions regarding the sale, please visit www.thecliffclub.net or email us at cliffclubservices@snowbird.com

the cliff club



Property Overview

The Cliff Club is an up-scale timeshare property located within The Cliff Lodge at Snowbird Ski & Summer Resort, Snowbird, Utah. The Cliff Club features 54 - 2 bedroom condominium, triple-lock off, units with outstanding views of the surrounding Wasatch Mountains, ski-in/ski-out capability, access to the world-class Cliff Spa, and over 500 inches of light, fluffy snow annually. Ownerships may be purchased in one of four seasons: Silver, Gold, Platinum or Platinum Plus and one of two unit types: Crest or Pinnacle. More information is available below on the specific seasons of ownership at The Cliff Club.

The Cliff Club's floating week and floating unit concept offers flexibility over the traditional fixed week and fixed unit timeshare concept. Reservations are made each year 12-months in advance of the season of ownership. The increased demand for holiday periods has caused the Platinum and Silver seasons to be further subdivided into Reservation Priority Groups to increase an owners opportunity of reserving a high demand period during their given priority year.

Snowbird Ski & Summer Resort includes the finest facilities the skiing world has to offer combined with an unparalleled accessibility to a major metropolitan city and international airport. Snowbird has also fostered a reputation for its environmental stewardship, for which it also has been awarded numerous prestigious awards. This has been Dick Bass' vision. He once said "My underlying dream for Snowbird is the creation of a year-round resort, which respects and complements the beauty and inspiration of this natural setting – a place dedicated to increasing human understanding through the enhancement of body, mind and spirit."

For more information on vacation ownership opportunities
please visit our website at www.thecliffclub.net

Seasons

Gold

The Gold Season runs from mid-June through the first of October. It includes weeks 24-39. Reservations for the Gold season are taken each June beginning the second Monday of that month.

Silver

The Silver Season runs from the beginning of October through November and mid-April through the first of June. It includes weeks 40-47 and 16-23. Reservations for the Silver season are taken each September beginning the second Monday of that month.

Notice: Due to variable spring conditions, including unseasonably warm temperatures causing rapid snow melt, Snowbird may be forced to close runs and lifts at any time. While Snowbird makes every effort to maintain ski out/ski in service to the Cliff Lodge via Chickadee chair lift, Snowbird may be forced to close the Chickadee lift and run due to low snow and/or dangerous conditions.

Platinum & Platinum Plus

The Platinum Season runs from the beginning of December to mid-April. It includes weeks 48-50 and 1-15. Reservations for the Platinum season occur every November and begin on the Second Monday of that month.

A Platinum Plus ownership offers all the benefits of a Platinum with the Plus of a GUARANTEED week. Owners of these seasons purchase the rights to either the week including Christmas or the week including the New Year. A Platinum Plus owner may choose, each year, to reserve a week in the Platinum season but in doing so must give up the rights to their guaranteed week.

For more information please refer to the reservation policies on www.thecliffclub.net or contact Owner Services.



Room Type Overview

The Cliff Club is an up-scale timeshare property located in Snowbird, Utah. The Cliff Club features 54 - 2 bedroom condominium, triple-lock off, units with outstanding views of the surrounding Wasatch Mountains, ski-in/ski-out capability, access to the world-class Cliff Spa, and over 500 inches of light, fluffy snow annually. Ownerships may be purchased in one of four seasons: Silver, Gold, Platinum or Platinum Plus and one of two unit types: Crest or Pinnacle.

The triple-lock off capabilities of an ownership at The Cliff Club give the owner expanded vacation opportunities. The owner may choose to place portions of their ownership unit in an exchange program or a rental program if their needs do not require use of their entire ownership.

Pinnacle Condominium

A Pinnacle Condominium consists of two bedrooms, and great room providing 1,682 Sq. Ft. of living space with accommodations for up to 10 persons. Each bedroom provides a king bed, as well as a queen size American Leather Comfort Sleeper® sofa bed. The 541 Sq. Ft. great room offers an excellent gathering place after a day of activities and provides an additional Comfort Sleeper® sofa bed. Each room is decorated in mission style furniture with Persian rug accents, hand-picked artwork and custom cherry wood cabinetry.

Pinnacle Features:

- Washer/Dryer in Master Bedroom
- 3 full baths w/marble countertops
- 3 televisions w/cable programming
- 3 DVD players
- 4 person hot tub on a private balcony
- Dining area
- Electronic locking safes
- Full kitchen featuring:
 - Refrigerator
 - Microwave
 - Dishwasher
 - Stove w/Oven
 - Coffee Maker
 - Island w/addtl. seating

Crest Condominium

A Crest Condominium consists of two bedrooms, and living room providing 1,464 Sq. Ft. of living space with accommodations for up to 10 persons. Each bedroom provides a king bed, as well as a queen size American Leather Comfort Sleeper® sofa bed. The 387 Sq. Ft. great room offers a comfortable gathering place after a day of activities and provides another Comfort Sleeper® sofa bed. Each room is decorated in mission style furniture with Persian rug accents, hand-picked artwork and custom cherry wood cabinetry.

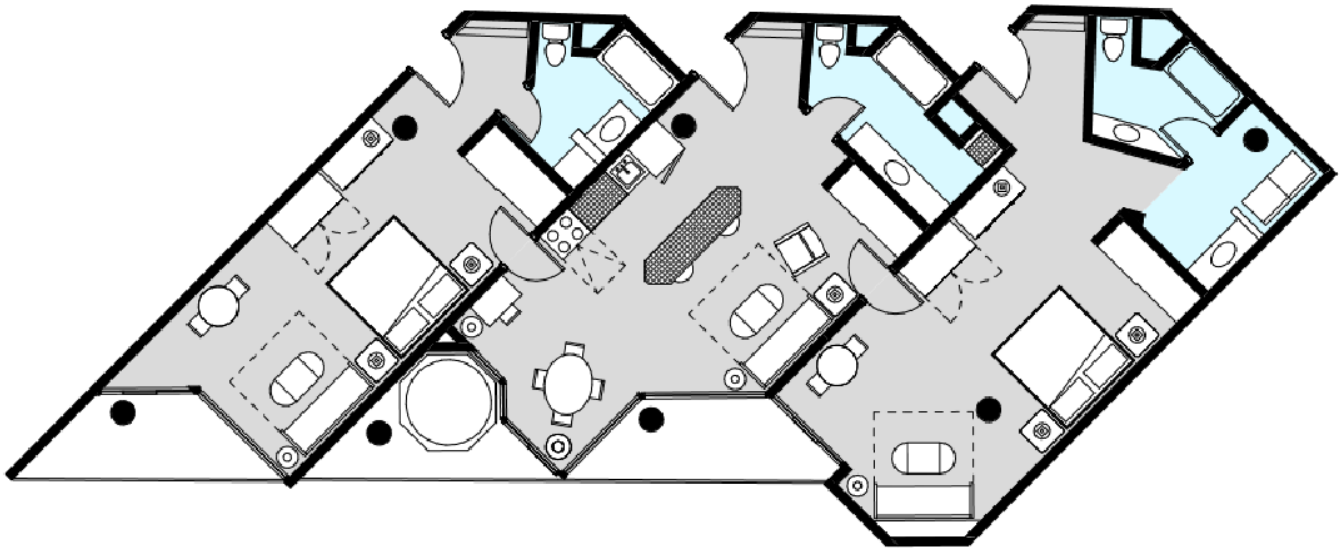
Crest Features:

- 3 full baths w/marble countertops
- 3 televisions w/cable programming
- 3 DVD players
- 2 person hot tub on a private balcony
- Dining area
- Electronic locking safes
- Full kitchen featuring:
 - Refrigerator
 - Microwave
 - Dishwasher
 - Stove w/Oven
 - Coffee Maker

Pinnacle

1,682 Square Feet
2 Bedrooms
3 Bathrooms
Full Kitchen
4 Person Whirlpool Hot Tub
Washer / Dryer

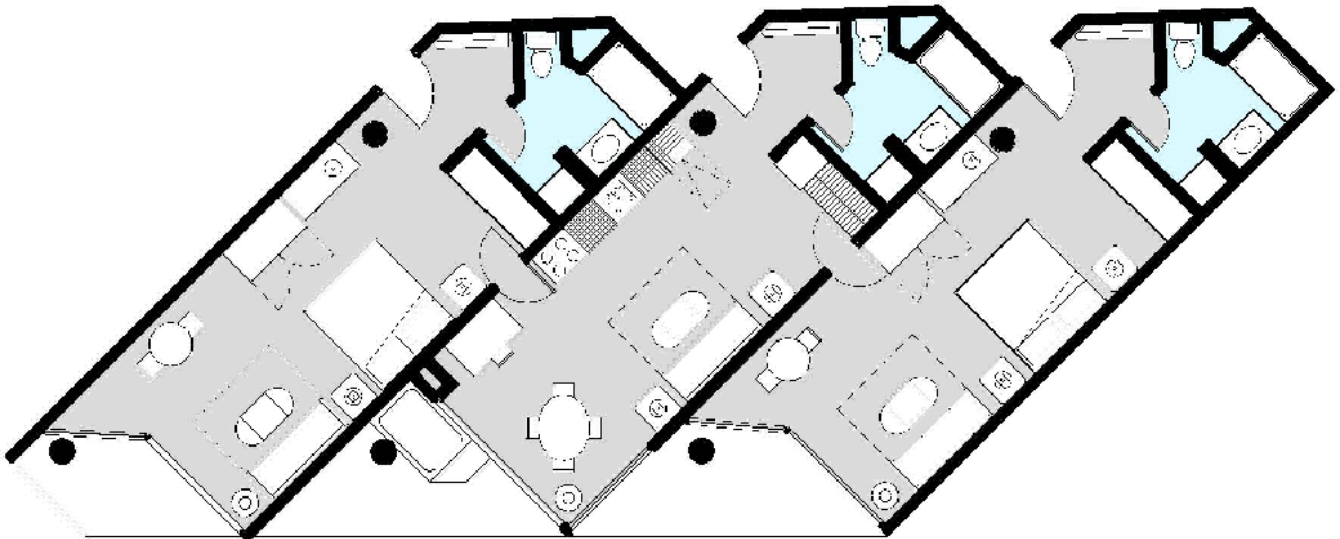
Private Balconies
Triple Lock-Out
Designer Furnishings
32" HDTV in each room.
Accommodations for up to 10 people.



Crest


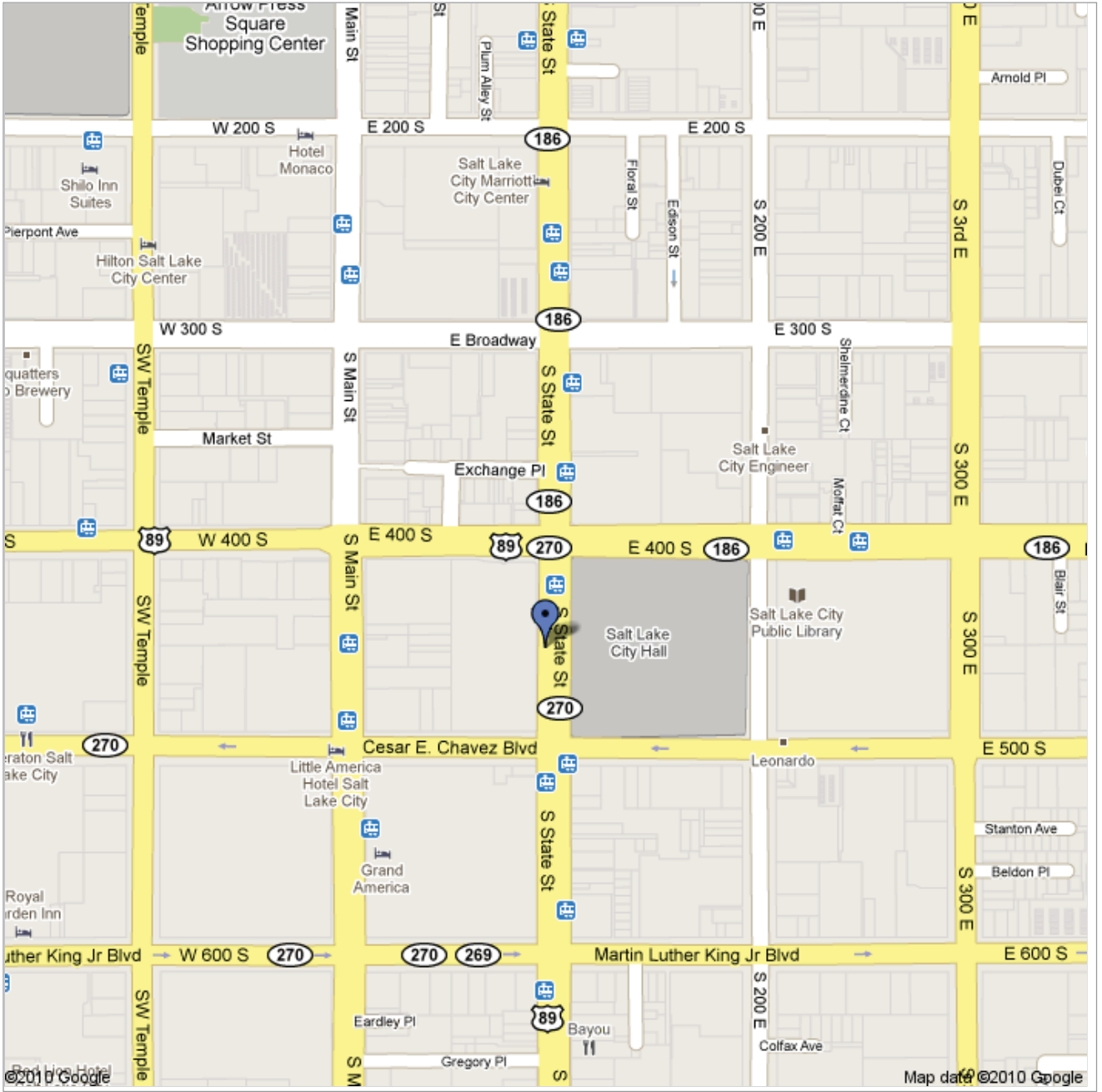
1,464 Square Feet
2 Bedrooms
3 Bathrooms
Full Kitchen
2 Person Whirlpool Hot Tub

Private Balconies
Triple Lock-Out
Designer Furnishings
32" HDTV in each room.
Accommodations for up to 10 people.





Get Google Maps on your phone
Text the word "GMAPS" to 466453

[Rate this map](#) - [Write a comment](#)

Scott M. Matheson



450 S. State Street
Salt Lake City, UT

The Cliff Club Annual Trustee Sale 2020

LOT #	Config	Usage	Season	VOI 1	Week	RPG
SILVER						
3	Crest	Even Year Occupancy	Spring Fall	314-316-318	17	C
7	Crest	Even Year Occupancy	Spring Fall	114-116-118	16	A
17	Crest	Even Year Occupancy	Spring Fall	214-216-218	41	A
23	Crest	Even Year Occupancy	Spring Fall	207-209-211	44	A
1	Crest	Odd Year Occupancy	Spring Fall	107-109-111	21	B
6	Crest	Odd Year Occupancy	Spring Fall	101-103-105	40	D
24	Crest	Odd Year Occupancy	Spring Fall	314-316-318	18	B
4	a Crest	Every Year Occupancy	Spring Fall	507-509-511	19	A
6	a Crest	Every Year Occupancy	Spring Fall	507-509-511	47	B
15	a Crest	Every Year Occupancy	Spring Fall	301-303-305	20	B
16	a Crest	Every Year Occupancy	Spring Fall	514-516-518	23	C
22	a Crest	Every Year Occupancy	Spring Fall	914-916-918	46	B
23	a Crest	Every Year Occupancy	Spring Fall	801-803-805	40	C
5	a Pinnacle	Every Year Occupancy	Spring Fall	402-404-406	18	B
7	a Pinnacle	Every Year Occupancy	Spring Fall	913-915-917	47	B
13	a Pinnacle	Every Year Occupancy	Spring Fall	613-615-617	17	D
14	a Pinnacle	Every Year Occupancy	Spring Fall	313-315-317	44	A
18	a Pinnacle	Every Year Occupancy	Spring Fall	702-704-706	44	C
25	a Pinnacle	Every Year Occupancy	Spring Fall	413-415-417	19	C
GOLD						
2	Crest	Even Year Occupancy	Summer	207-209-211	26	
22	Crest	Even Year Occupancy	Summer	101-103-105	37	
13	Pinnacle	Even Year Occupancy	Summer	313-315-317	35	
11	Crest	Odd Year Occupancy	Summer	114-116-118	31	
12	Crest	Odd Year Occupancy	Summer	108-110-112	33	
21	Crest	Odd Year Occupancy	Summer	201-203-205	25	
4	Pinnacle	Odd Year Occupancy	Summer	102-104-106	30	
14	Pinnacle	Odd Year Occupancy	Summer	202-204-206	37	
1	a Crest	Every Year Occupancy	Summer	307-309-311	27	
2	a Crest	Every Year Occupancy	Summer	401-403-405	29	
8	a Crest	Every Year Occupancy	Summer	308-310-312	36	
9	a Crest	Every Year Occupancy	Summer	608-610-612	33	
10	a Crest	Every Year Occupancy	Summer	601-603-605	24	
11	a Crest	Every Year Occupancy	Summer	614-616-618	27	
12	a Crest	Every Year Occupancy	Summer	707-709-711	38	
17	a Crest	Every Year Occupancy	Summer	308-310-312	35	
19	a Crest	Every Year Occupancy	Summer	807-809-811	24	
20	a Crest	Every Year Occupancy	Summer	907-909-911	31	
3	a Pinnacle	Every Year Occupancy	Summer	413-415-417	31	
21	a Pinnacle	Every Year Occupancy	Summer	402-404-406	39	
24	a Pinnacle	Every Year Occupancy	Summer	613-615-617	34	
PLATINUM						
15	Crest	Even Year Occupancy	Winter	314-316-318	2	A
19	Crest	Even Year Occupancy	Winter	101-103-105	49	C
10	Crest	Odd Year Occupancy	Winter	101-103-105	9	B
18	Crest	Odd Year Occupancy	Winter	208-210-212	2	D
20	Crest	Odd Year Occupancy	Winter	314-316-318	4	D